

# NOVA SIA-168 UNIVERSAL TOILET SUITE

# SI<sup>®</sup>

**Installation of Toilet Seat and Cleaning**  
It is recommended that toilet seat and cover be installed after all trades are finished

**Cleaning Recommendations**  
The high quality vitreous china finish on all sanitary ware can be maintained by simply using mild soapy water and wiping over. Sanitary ware should not be cleaned with abrasive materials e.g. steel wool/scourers. Do not use any corrosive or abrasive cleaning agents containing acids or scouring agents as this may lead to surface damage. Bleaches can also discolour seats and hinges and therefore should not be used. If your toilet has metal hinges they should only be cleaned with a mild liquid domestic cleaner, with soft soapsuds or Steel & Chrome cleaner. After cleaning, rinse with clean water and polish with a clean soft cloth.

**Note:**

All measurements for roughing-in should be taken from finished wall/floor. All plumbing installations and fitting must be carried out by a licensed plumber and MUST comply to AS/NZS3500 series of certification for plumbing and drainage.

## INSTALLATION INFORMATION

**1**

**1.** Rough in position of water inlet, waste outlet and floor fixing bracket holes. Ensure inlet connection extends 60mm from finished wall. Drill holes for floor fixing bracket then fix brackets to floor. Please leave finished surface allowance before preparing plumbing.  
P TRAP 180MM  
S TRAP 90-180 MM

**2**

**2.** Place rubber seal into pan recess (do not use sealant). Place cistern screws into holes on the inside of cistern, making sure washers are located correctly. Gently lower cistern onto pan locating fixing screws into matching pan screw holes. Secure cistern to pan by installing nuts and washers from the cavity behind the pan. Before tightened fully make sure cistern sits square and straight to pan.

**P-Trap**

**3**

**3.** Set up waste pipe so that the end of the pan collar extends 180mm from the finished floor.

**S-Trap**

**4**

**4.** Align and push fully assembled toilet back to the wall, connecting pan spigot to pan collar. Bucket flush and check for leaks.

• Nova Universal Toilet Suite suitable for S or P trap  
• Also Back and Bottom Entry

**6**

**7**

**8**

**6.** IF BACK INLET, SKIP THIS STEP. Remove cap from cistern plug A or B at base cistern. Connect flexible hose to cistern plug A or B depending on location of stop tap. Complete stop tap connection to underside of cistern plug C or D. Fill cistern and ensure correct water level. Note: Inlet valve can be adjusted if required

**7.** Fit off stop tap then connect rear water inlet valve to stop tap. Fill cistern and ensure correct water level.

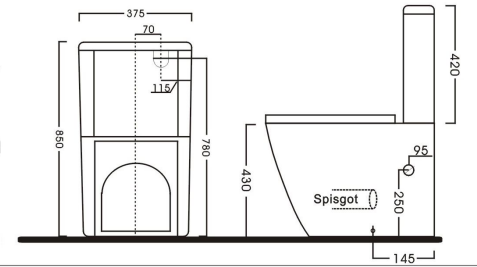
**8.** Ensure that the toilet is level and aligns to the wall before fixing pan to floor using screws and caps provided.

# NOVA

## Pre Installation Checks

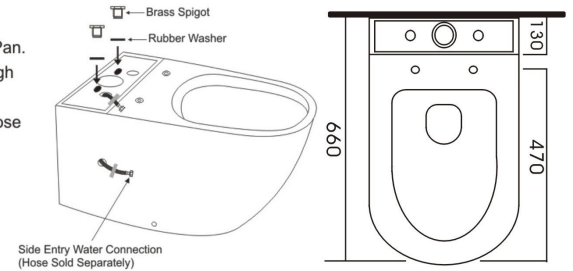
**This product is to be installed by a licensed Plumber**

1. Check that the toilet is compatible with your current set out requirements. This Concerto has a set out distance of 90-180mm for S Trap and 180mm for P Trap
2. This toilet comes with an S Trap Vario Bend, P Trap connection sold separately.
3. Before installing your new toilet please make sure you have received all items and that they are undamaged. Any damage claims after installation will not be accepted.
4. Check that the Floor and Wall are level and Perpendicular.
5. This product is configured for bottom/side entry. For rear entry you need to purchase a rear entry kit (sold separately)

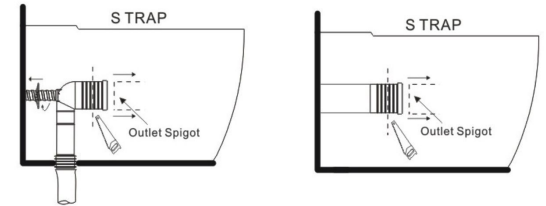


## Side Entry Installation

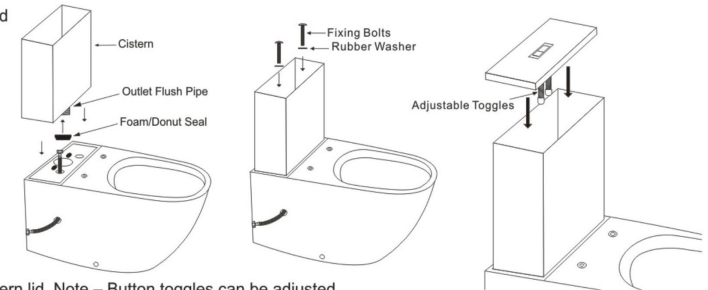
1. Install the Brass Spigots and Rubber washers into the Pan.
2. Feed a flexible connecting hose (sold separately) through the side entry and through the top of the Pan. It's recommended that you tape it temporarily to hold the hose into position (as shown in picture)
3. Floor Fixing Kit – measure and install the floor fixing kit (see instructions in kit) don't install the external locking SS screw at this stage.



4. Insert the Vario Bend onto the Pan Outlet Spigot. If trimming is required work out the measurement and mark the cutting line.
5. Check the measurements & then cut the Vario Bend to the correct length
6. Place Rubber Seal and Cover over the front of the Vario Bend and install, ensure that the sewer connection is connected correctly and that a good seal has been achieved



7. Ensure the Foam/Donut Seal is placed over the Outlet Flush Pipe on the base of the Cistern
8. Connect the Water Supply Hose to the base of the Cisterns Inlet Valve.
9. Connect the Cistern and Pan together and lock into place using the fixing bolts provided. (the outlet flush valve can be removed to assist with the bolt assembly by turning it anti clockwise and then lifting it out)
10. Install the Flush Buttons onto the Cistern lid. Note – Button toggles can be adjusted.



Note - This toilet is not suitable to be used with some offset collars and slab adaptors.

Before fixing the toilet to the floor, connect the water supply and ensure that the toilet is working correctly by doing several flush tests. Check for leaks.

Once you are confident that there are no leaks and the toilet is working correctly install the Pan into the Floor Fixing Kit provided and apply a bead of Wet Area Silicone around the base of the Pan (you will need to allow recommended drying time before use). Install the side white cap over the side entry hole that was not used. Install the seat after the silicone has dried. (refer to seat installation instructions)